

EDUCATION PLACEMENT

Enrolled in School	177
Enrolled in Career & Technical Education	72
Enrolled in Special Education	55
GED Certificates Awarded 5 FY18	5
High School Diplomas Awarded 2 FY18	3

EDUCATION PLACEMENT WHILE ON PAROLE

District High School	30
Charter School	21
Online School	4
GED Preparation	1
Post-Secondary School	4
Vocational Training	10
Employment	15

HEALTH SERVICES

Hospital Admissions	0
Intake Medical Screenings	38
Intake Dental Screenings	29
Medical Visits	108
Dental Visits	60
Nursing Sick Call Visits	1,380
Mental Health Visits	53

TREATMENT PROGRAMS

CORE PROGRAM	MALE	FEMALE	TOTAL
New Freedom	165	15	180

SPECIALTY PROGRAMS – Treatment in addition to Core Program

Sexual Behavior	19	0	19
Mental Health	7	6	13
Substance Treatment	47	9	56
TOTAL	73	15	88

RESTORATIVE JUSTICE

CATEGORY	THIS MONTH	FY18 TOTAL
Victim Restitution Collected	\$243.36	\$544.92
Victim Notification of Release	3	4

COMMITMENT OFFENSES

CATEGORY	SECURE CARE	PAROLE *
Property	48	15
Crimes Against Persons	49	21
Drug Offense	30	4
Public Order	15	3
Technical	0	0
Other	29	6
Weapons	9	1
OFFENSE TOTALS	180	50

LEVEL OF OFFENSE

CATEGORY	SECURE CARE	PAROLE *
Felony 1	0	0
Felony 2	12	2
Felony 3	37	10
Felony 4	18	9
Felony 5	16	4
Felony 6	55	12
Misdemeanor	23	10
Technical Offense	19	3
OFFENSE TOTALS	180	50

REFERRAL COUNT

CATEGORY	SECURE CARE	PAROLE *
1 - 3 Referrals	28	10
4 - 6 Referrals	24	10
7 - 9 Referrals	29	4
10 - 12 Referrals	30	8
13 or More Referrals	69	18
REFERRAL TOTALS	180	50

* Parole data does not include Interstate "In" youth.

RECIDIVISM RATES

Recidivism: Return to custody with the Arizona Department of Juvenile Corrections (ADJC) or the Arizona Department of Corrections (ADC) following the release from a first time ADJC commitment.

LENGTH OF FOLLOW-UP	CRIMINAL OFFENSES	CRIMINAL OFFENSES & TECHNICAL VIOLATIONS OF ADJC PAROLE
12 Months (2015 Releases)	20.3%	35.9%
24 Months (2014 Releases)	34.7%	45.0%
36 Months (2013 Releases)	36.9%	49.4%

ARIZONA DEPARTMENT OF JUVENILE CORRECTIONS
SAFER COMMUNITIES THROUGH SUCCESSFUL YOUTH

JUST THE FACTS

AUGUST 2017

DOUGLAS A. DUCEY
GOVERNOR

JEFF HOOD
INTERIM DIRECTOR

For more information please contact:

ARIZONA
DEPARTMENT OF JUVENILE
CORRECTIONS
1624 West Adams Street
Phoenix, Arizona 85007

(602) 364-4051
www.adjc.az.gov

This document provides preliminary, month end data and may be updated as new information becomes available. Please refer to our online reports for the most current statistics. Thank you.

Revised: September 6, 2017

ADJC CENSUS

CATEGORY	MALE	FEMALE	TOTAL
Secure Care	165	15	180
Community Supervision (Parole)	48	2	50
Community Supervision (Interstate)	74	21	95
Probation (Interstate Out)	38	10	48
TOTAL ADJC POPULATION	325	48	373

SECURE CARE POPULATION DETAIL

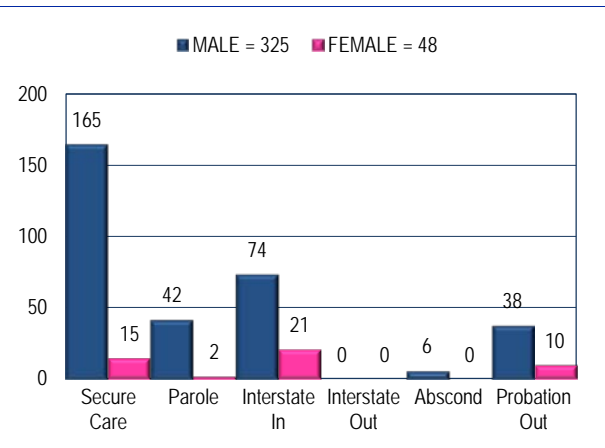
CATEGORY	MALE	FEMALE	TOTAL
Design Capacity	410	40	450
Juvenile Population	165	15	180
BED SURPLUS	245	25	270

MONTHLY ADMISSIONS	MALE	FEMALE	TOTAL
New Commitment	28	2	30
Parole Violator (Revoked)	9	1	10
Re-Commitment	0	0	0
TOTAL ADMISSIONS	37	3	40

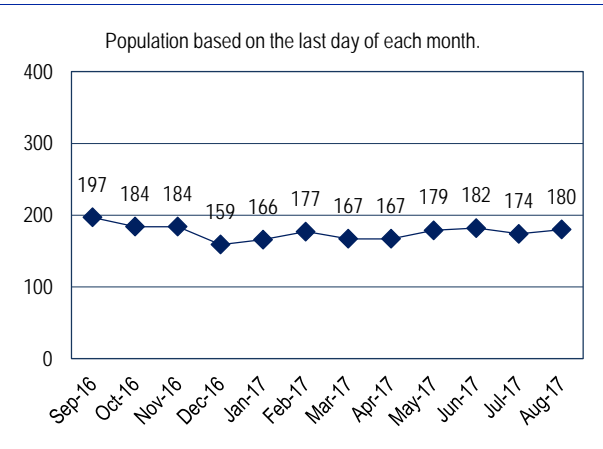
MONTHLY RELEASES	MALE	FEMALE	TOTAL
Release to Community	16	1	17
Aged Out (18)	12	2	14
Transfer to Adult	1	0	1
Ice Discharge	2	0	2
TOTAL RELEASES	31	3	34

MONTHLY GROWTH	MALE	FEMALE	TOTAL
	6	0	6

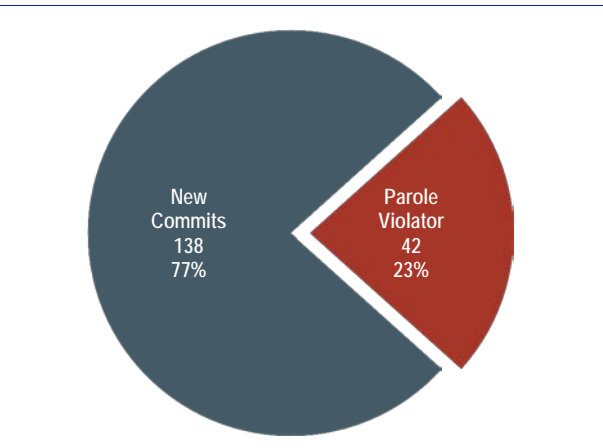
AGENCY POPULATION BREAKDOWN



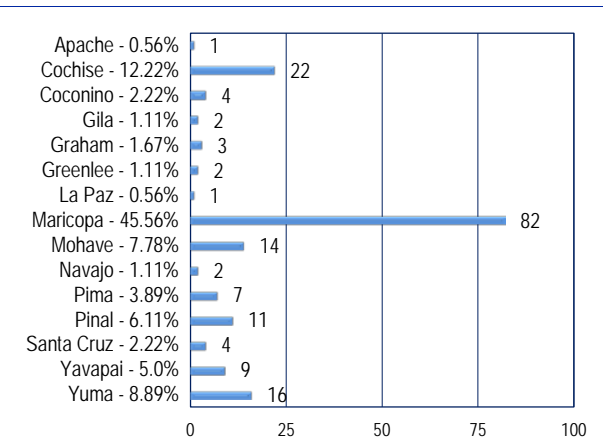
MONTHLY SECURE CARE POPULATION



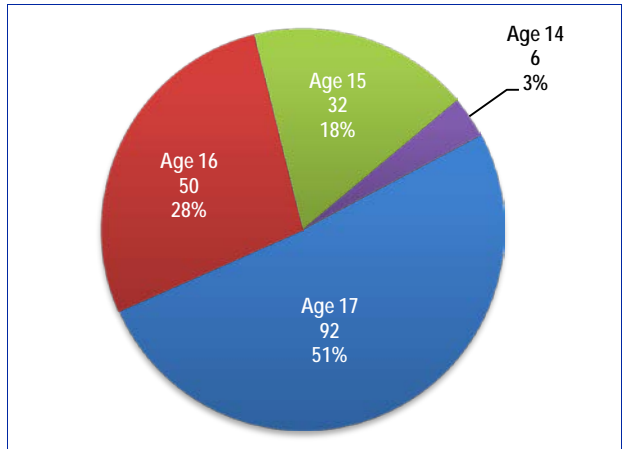
SECURE CARE POPULATION BY STATUS



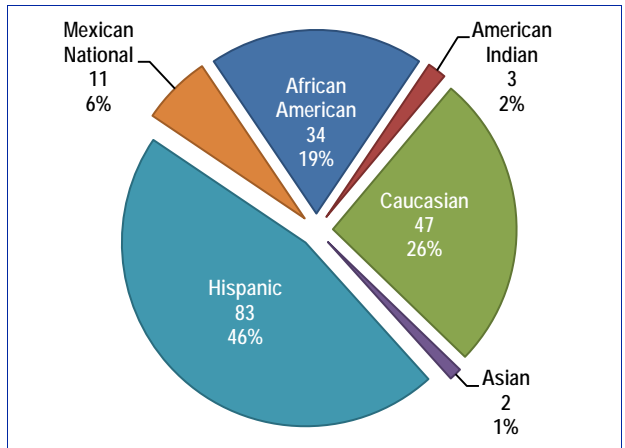
SECURE CARE POPULATION BY COUNTY



SECURE CARE AGE DISTRIBUTION



SECURE CARE ETHNIC DISTRIBUTION



SECURE CARE POPULATION BY STATUS

